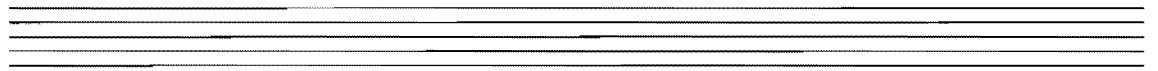
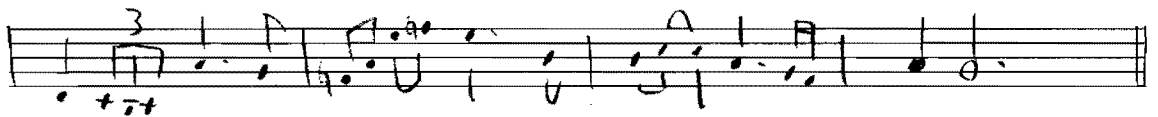
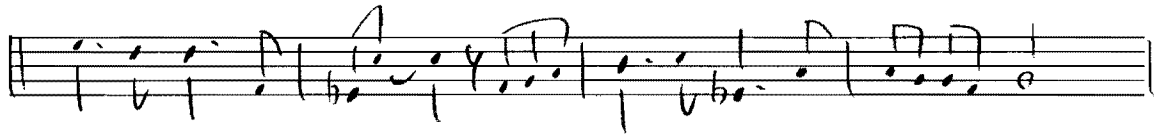
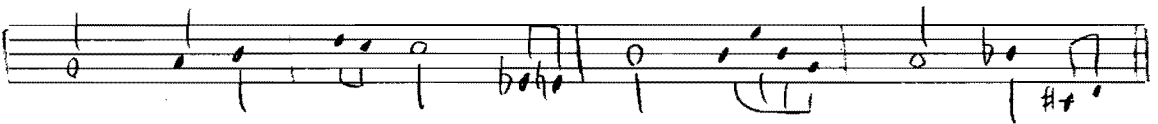
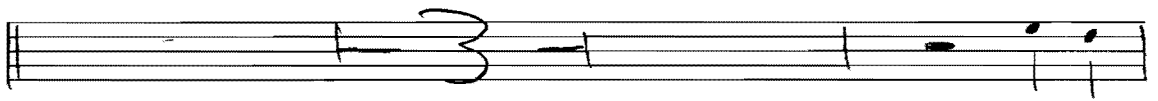
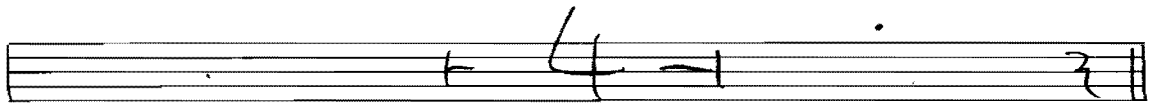
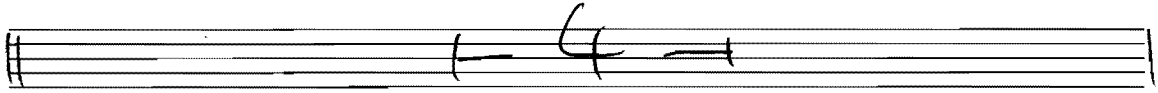


TP (in C)

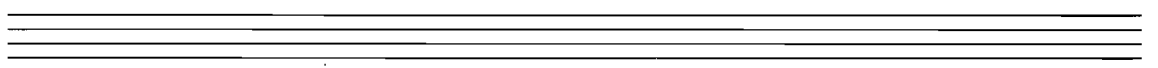
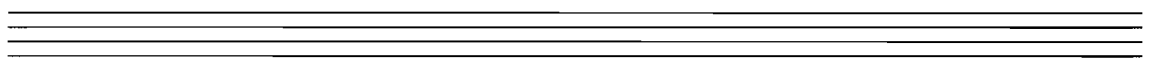
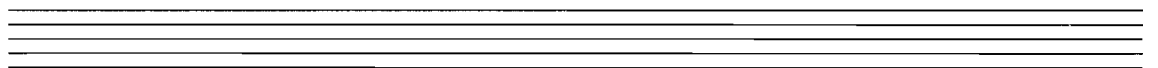
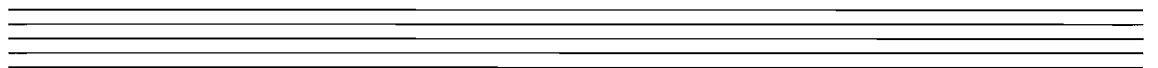
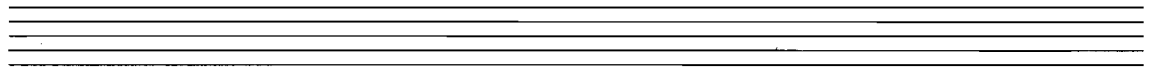
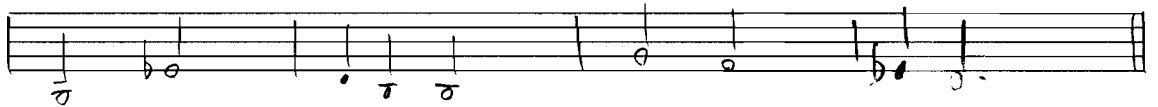
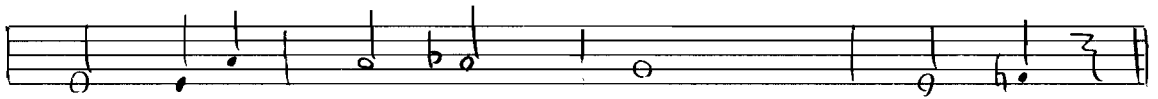
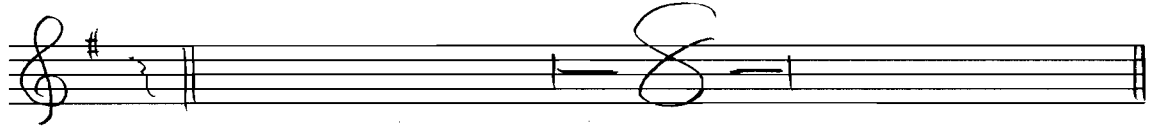
Bitter Coffee



Ts. As

(inc)

Bitter Coffee



tb

Bitter Coffee

Handwritten musical notation for the first system, including notes and chords:

Chords: G_{7b9} , $Cdim/G$, $F^{#(b9)}$, B_7 , E_{-7} , A_7

Notes: A_{-7} , D_7 , B_{-7} , E_7 , A_7 , A_{-7} , D_7

Chords: G_{7b9} , $Cdim/G$, $F^{#(b9)}$, B_7 , E_{-7} , A_7

Notes: A_{-7} , D_7 , B_{-7} , E_7 , A_{-7} , D_7 , G_{7b9} , D_{-7} , G_7

Handwritten musical notation for the second system, consisting of a single staff with rests and a final note.

Handwritten musical notation for the third system, consisting of a single staff with notes and rests.

Handwritten musical notation for the fourth system, consisting of a single staff with notes and rests.

Handwritten musical notation for the fifth system, consisting of a single staff with notes and rests.

Handwritten musical notation for the sixth system, consisting of multiple empty staves.

Rhythm Section

Bitter Coffee

2nd Time
(Gdim7 G07)

Chords: G07, Cdim7/G, F#(b5) B7, E-7, A7(1b9)

Chords: A-7, D7, B-7, E7, A7, A-7, D7

Chords: B-7(1b9), E7, A-7, D9, G07

Chords: Ab A07/D, G07/D, A-7(b5)/D, D7, G07, D7, G7(b9)

Chords: C07, B-7(b5), E7, A7, A-7, D7

Chords: (Gdim7 G07), G07, Cdim7/G, F#(b5) B7, E-7, A7

Chords: A-7, D7, B-7(b5), E7, A-7, D7, Cdim7/G, G07, A-7, D7