

♯D (in C)

♩: 134

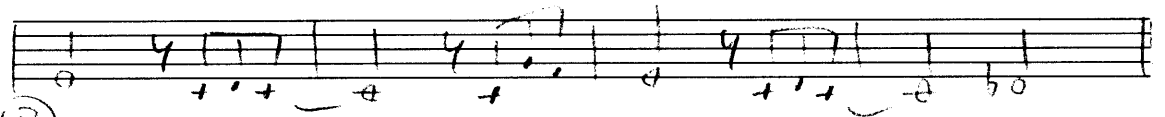
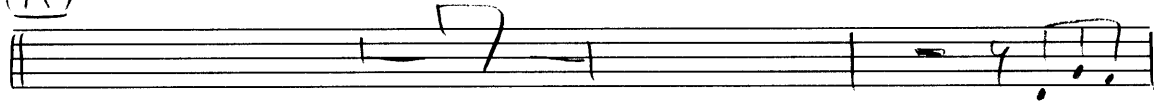
# Brand New Day

by Yusuke Imanishi

(Intro)



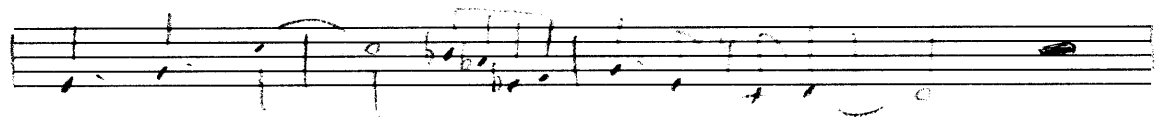
(A)



(B)



(A')



(C)

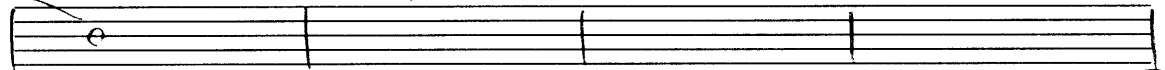


G<sup>b</sup><sub>2</sub>

G<sup>b</sup><sub>2</sub>sus<sub>7</sub>

G<sup>b</sup><sub>2</sub>

G<sup>b</sup><sub>2</sub>sus<sub>7</sub>



G<sup>b</sup><sub>2</sub>

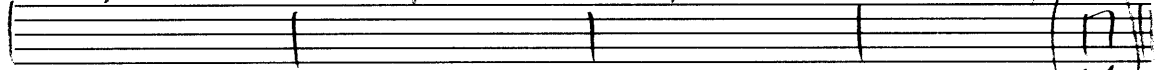
G<sup>b</sup><sub>2</sub>sus<sub>7</sub>

G<sup>b</sup><sub>2</sub>

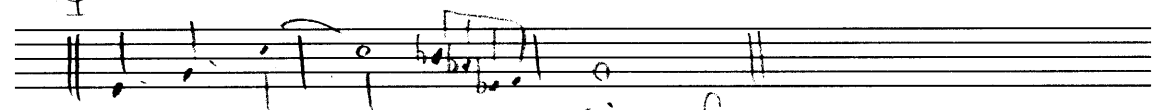
D<sub>7</sub>

G<sub>7</sub>

last day



♩



fine

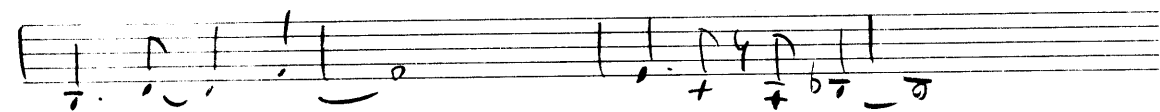
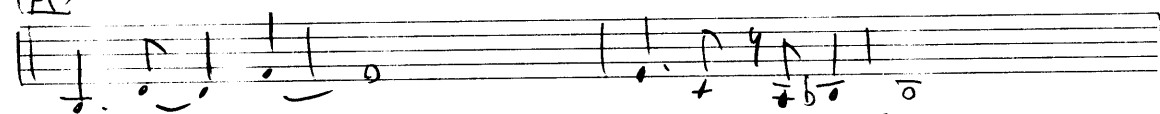
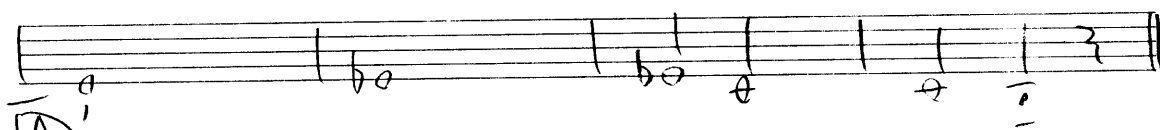
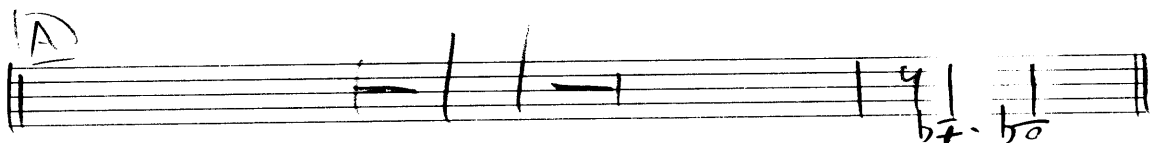
ts (inc)

# Bland New Day

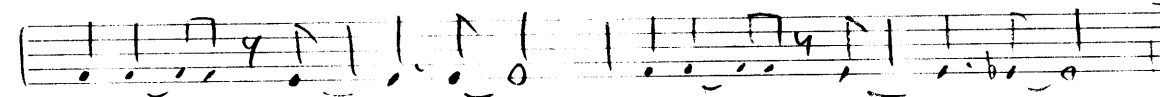
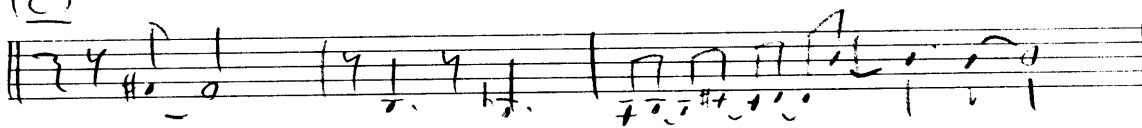
by Yusuke Imanishi

d: B4

Intro



①



End



Fin

fb

# Bland New Day

by Yusuke Inanishi

♩ = 134

Intro

Musical staff with a 7-measure rest.

(A)

Musical staff for section A, first line.

Musical staff for section A, second line.

Musical staff with a 3-measure rest.

(B)

Musical staff for section B, first line.

Musical staff for section B, second line.

(A')

Musical staff for section A', first line.

Musical staff for section A', second line.

Musical staff with a 3-measure rest.

(C)

Musical staff for section C, first line.

Musical staff for section C, second line.

Musical staff for section C, third line.

Final musical staff with a double bar line.

Rh, then Section

# Bland New Day

by Yusuke Imanishi

Basic N.Y.A.  
Intro  
♩ = 134

Chords: G<sup>b</sup>7, G<sup>b</sup>Sus7, G<sup>b</sup>7, G<sup>b</sup>Sus7

Chords: G<sup>b</sup>7, G<sup>b</sup>Sus7, G<sup>b</sup>7, D-7, G7

Section A: C7, B<sup>b</sup>Sus7, C7, A<sup>b</sup>(B<sup>b</sup>)7

Chords: C7, B<sup>b</sup>Sus7, C7, C<sup>b</sup>Sus7

Chords: F7, E7, F7, B<sup>b</sup>7, E7

Section B: D7, C<sup>#</sup>7, F<sup>#</sup>7, B-7, A, A<sup>b</sup>(B<sup>b</sup>)7, D<sup>b</sup>7

Chords: F<sup>#</sup>7, B7, F-7, E<sup>b</sup>7, D-7, G7

Section A': C7, B<sup>b</sup>Sus7, C7, A<sup>b</sup>(B<sup>b</sup>)7

Chords: C7, B<sup>b</sup>Sus7, C7, C<sup>b</sup>Sus7

Chords: F7, E<sup>b</sup>Sus7, F7, B<sup>b</sup>7, E<sup>b</sup>7

Section C: D7, C<sup>#</sup>7, F<sup>#</sup>7, B-7, A, A<sup>b</sup>(B<sup>b</sup>)7, D<sup>b</sup>7

Chords: G<sup>b</sup>7, G<sup>b</sup>Sus7, G<sup>b</sup>7, G<sup>b</sup>Sus7

Rhythm Section

Brand New Day - ② by Yusuke Imanishi

Handwritten musical notation for a rhythm section. The first staff shows a sequence of chords:  $G^b_7$ ,  $G^b_7$ ,  $G^b_7$ ,  $D_7$ ,  $G_7$ , and a double bar line. The second staff is labeled "Ending" and shows a sequence of chords:  $C_7$ ,  $B^b_7$ , and  $B_7^{(b9)}$ , with rhythmic notation below the notes. Below these are several empty musical staves.