

tp $\text{♩} = 208$

Journey

$\frac{1}{2}$

Intro

16

There / for the first

mp

Play

1. mp

mp

2.

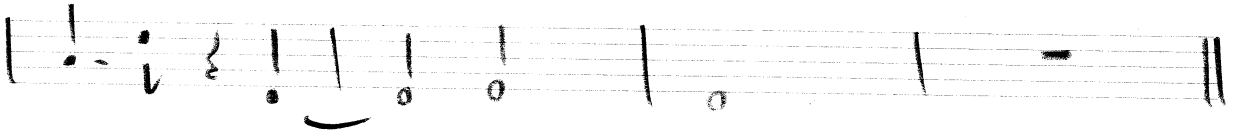
7

mp

tp

Journey

2/2



ts
♩ = 208

Journey 1/2

Handwritten musical score for 'Journey 1/2'. The score is written on ten systems of five-line staves. The first system begins with a treble clef, a key signature of one sharp (F#), and a tempo marking of quarter note = 208. A large '-15-' is written above the first staff. The music consists of a melody line and a bass line. The melody line features various note values including quarter, eighth, and sixteenth notes, often beamed together. The bass line includes notes with stems pointing down and some with plus signs. There are several dynamic markings: 'mp' (mezzo-piano) appears in the sixth system, and 'f' (forte) appears in the seventh system. A circled section of the melody in the seventh system is highlighted. The score concludes with a double bar line and repeat dots. The paper is lined with a spiral binding on the left side.

fs

Journey $\frac{3}{2}$



tb

Journey 1/2

Handwritten musical notation for a tuba part. The notation is on a five-line staff with a treble clef. It consists of two staves of music. The first staff has notes with various accidentals (sharps, flats, naturals) and a fermata. The second staff continues the melody with similar accidentals and a fermata at the end.

Handwritten text, possibly a title or instruction, partially obscured by the musical staff.

Rhythm Section

Journey

Intro

D₉

G-13/D

X3

Handwritten musical notation for the first staff, including notes, stems, and chord symbols like G-13/D and A₇(#9)/E. Includes the instruction "pick up ts".

St. Theme

D₉

G-13/D

A₇(#9)

Handwritten musical notation for the second staff, including notes, stems, and chord symbols like F₇ and B₇.

Chord progression: E -> A C[#]₇ F[#]₇(b9) B₇ / A A^b₇ D^b₇

1. F[#] -> B₇(b9) E₇ A₇

2. F[#] -> B₇(#9) E₇ A₇(b9) D₉ D₉

G₉ C₇

F[#] B₇

E₇ / E^b / C[#]₇ F[#]₇

B₇ E₇ B^b₇ E₇ A₇

3. F[#] B₇(#9) E₇ A₇ D₉ E₇ A₇ D.S.

Ending D.C.