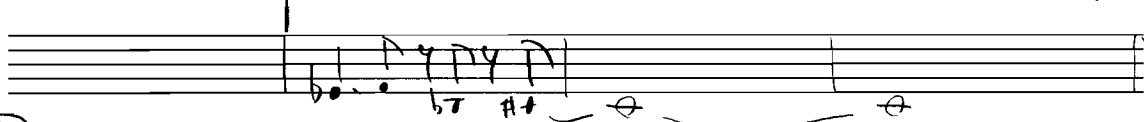
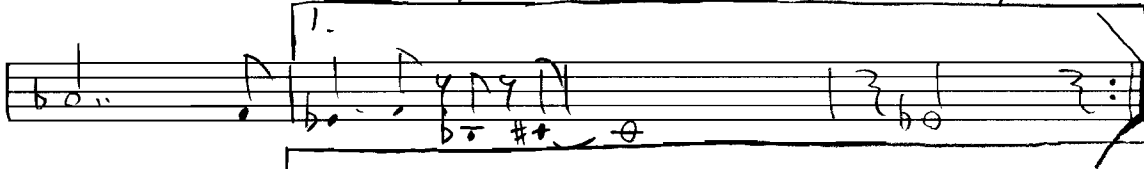
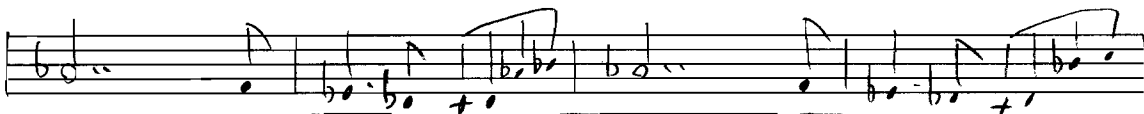


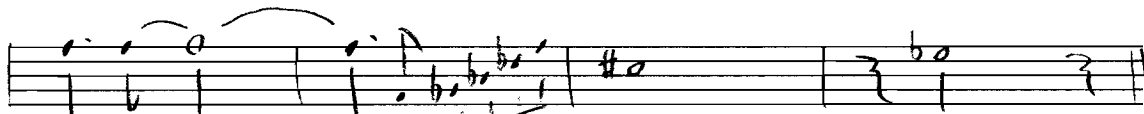
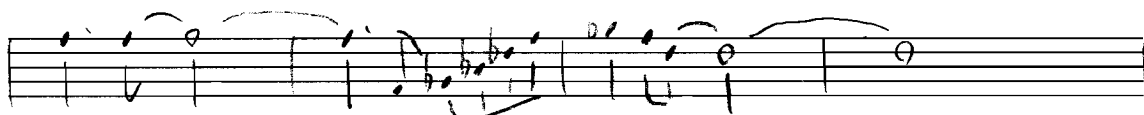
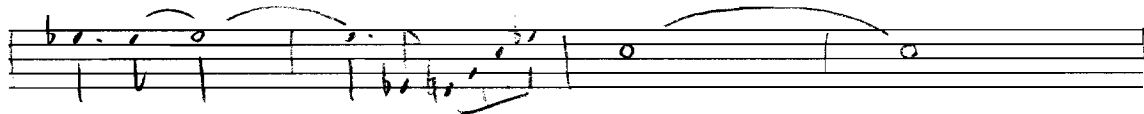
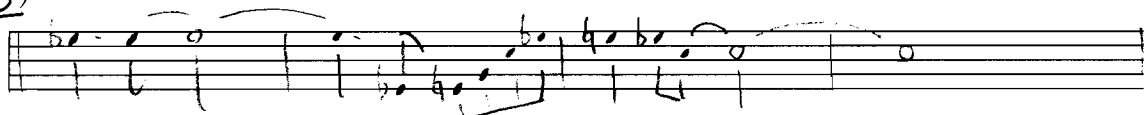
tr (In C)

# Looking Up $\frac{1}{2}$

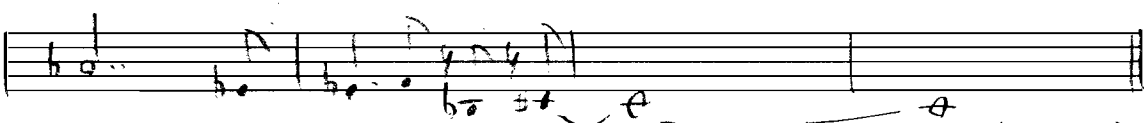
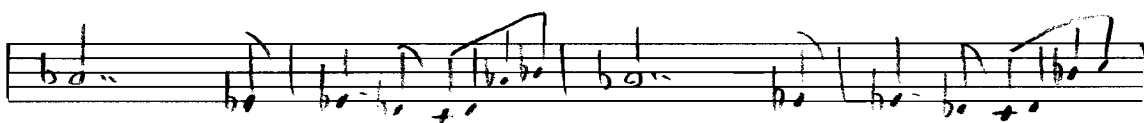
(A) (2nd Time Only)



(B)



(A') - 8.

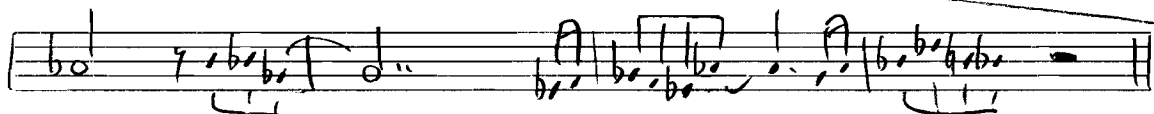
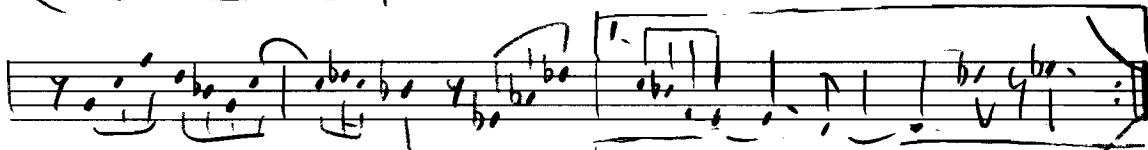
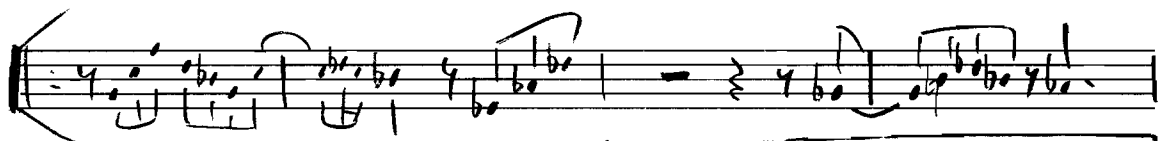


(C)

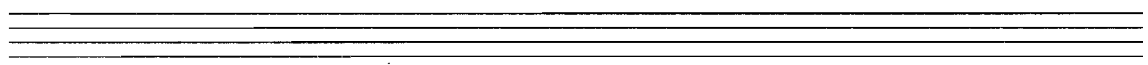
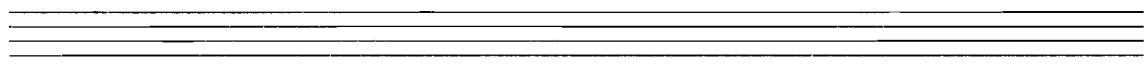
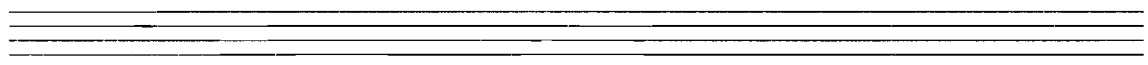
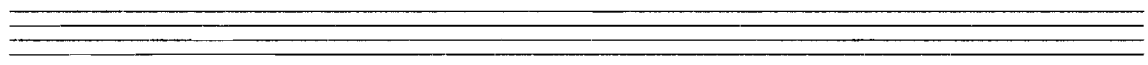
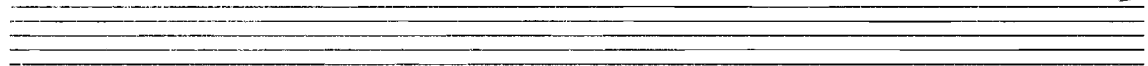
tp

# Looking Up $\frac{3}{2}$

after solos



DS.



N<sub>5</sub> (in C)

# Looking Up $\frac{1}{2}$

**[A]**

Handwritten musical notation for section A, consisting of five staves. The first staff begins with a treble clef and a key signature of one flat (Bb). It contains a series of eighth and sixteenth notes, some beamed together, with a '3' above a triplet. The second staff continues the melody. The third staff has a first ending bracket. The fourth staff has a second ending bracket. The fifth staff concludes the section with a double bar line.

**[B]**

Handwritten musical notation for section B, consisting of five staves. The first staff begins with a treble clef and a key signature of one flat (Bb). It contains a series of eighth and sixteenth notes, some beamed together. The second staff continues the melody. The third staff has a first ending bracket. The fourth staff has a second ending bracket. The fifth staff concludes the section with a double bar line.

**[A']** S.

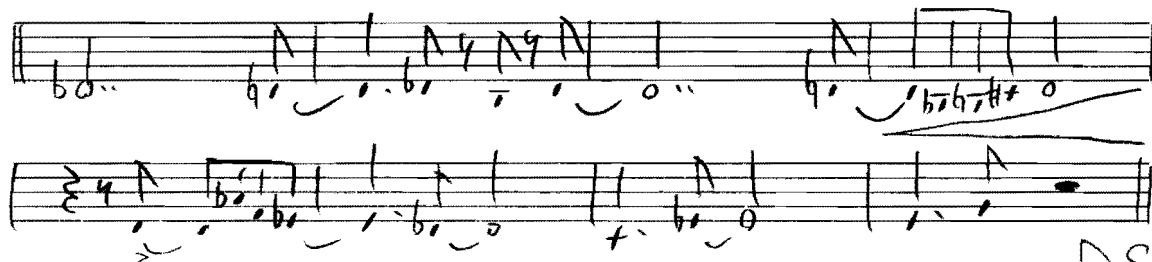
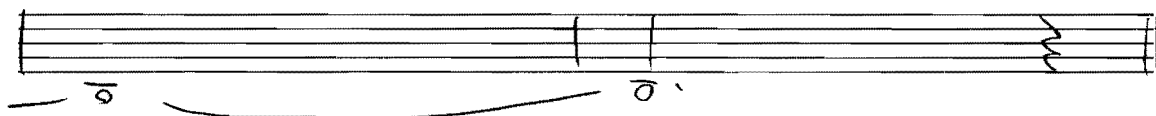
Handwritten musical notation for section A', consisting of three staves. The first staff begins with a treble clef and a key signature of one flat (Bb). It contains a series of eighth and sixteenth notes, some beamed together, with a large '8' written above the staff. The second staff continues the melody. The third staff concludes the section with a double bar line.

As  
TS (inc)

# Looking Up - (2)

(1)

After Solos



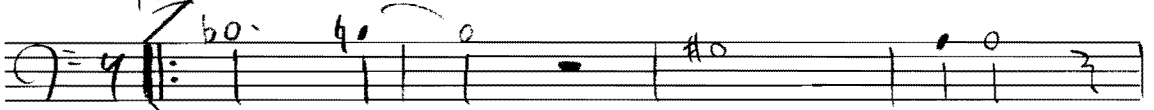
D.S.



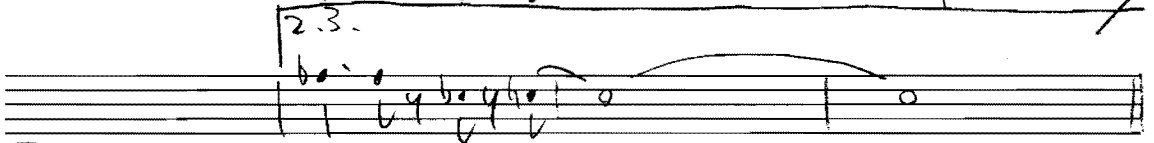
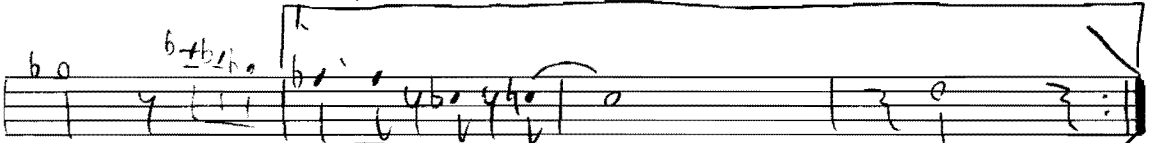
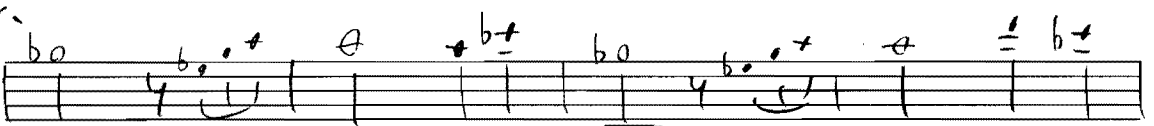
#b

# Looking Up 1/2

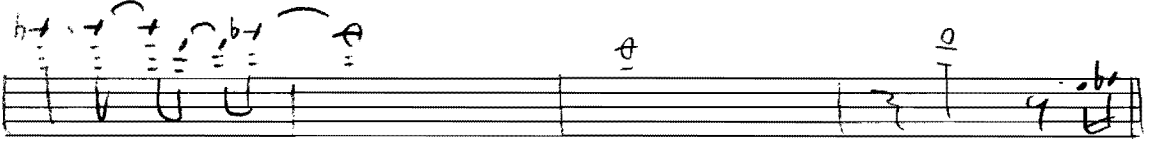
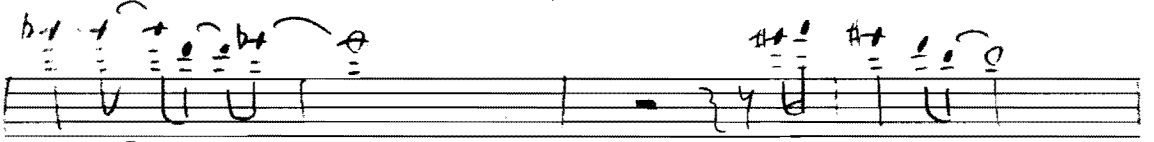
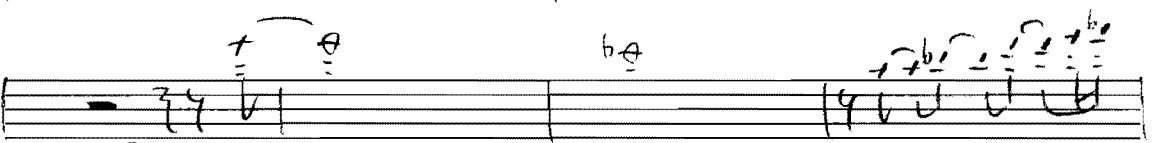
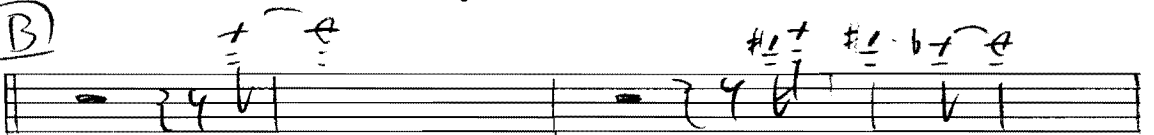
(A)



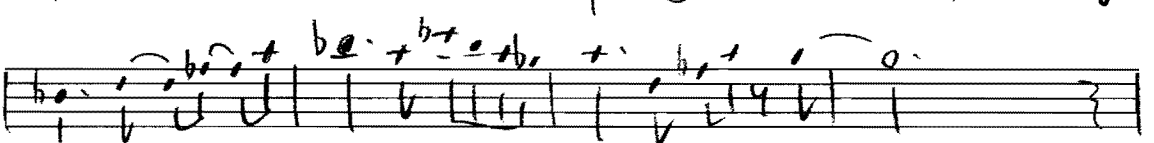
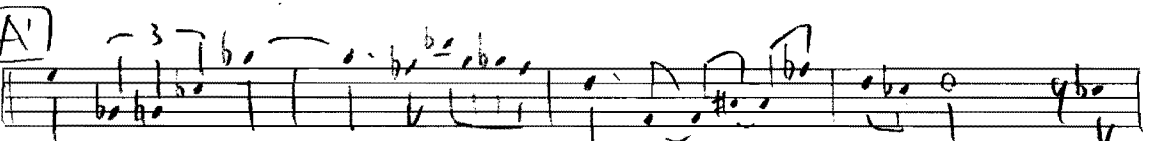
-8-



(B)



(A')



D.S.

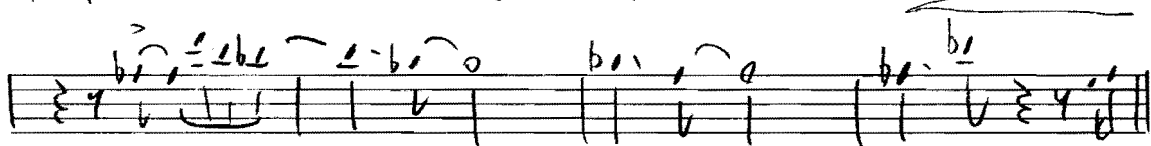
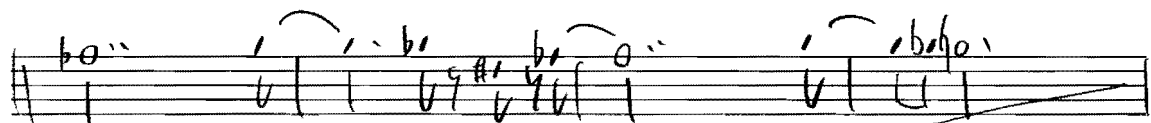
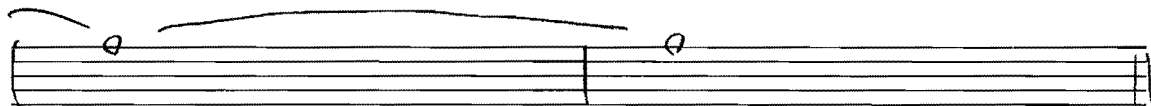
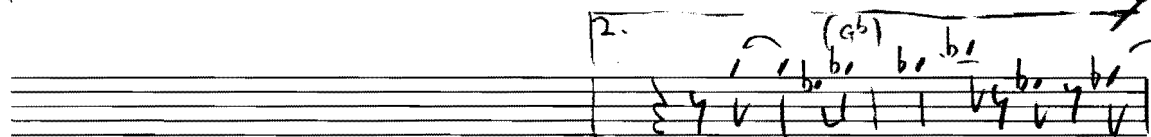
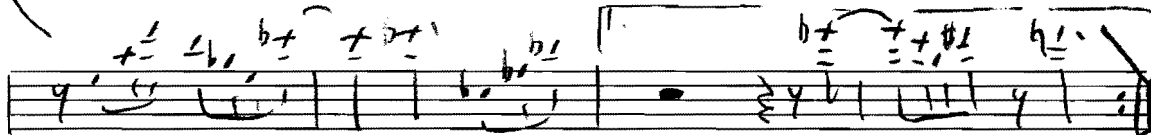
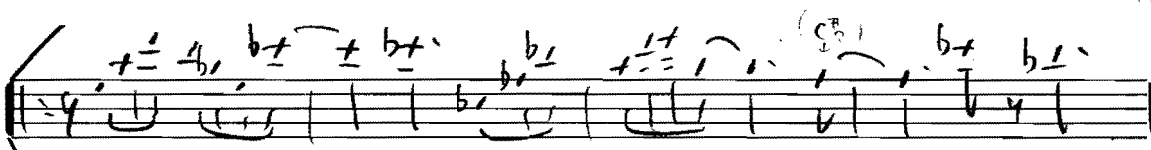
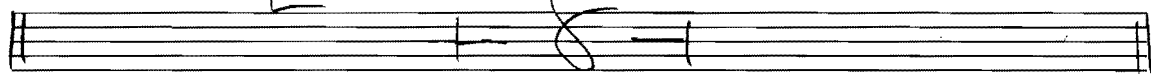
fb

④

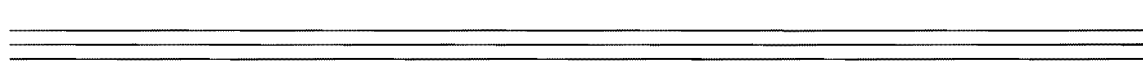
after Solo

# Looking Up $\frac{2}{2}$

③



① ~ !!



# Rhythm

## Looking Up $\frac{1}{2}$

Handwritten musical score for guitar, featuring chords and rhythm notation across multiple staves. The score includes various chord voicings and rhythmic patterns, with some sections marked with repeat signs and a double bar line.

Chords and voicings shown include:

- $A^b_{-7}$
- $G_7^{(\#9)}$
- $F_{-7}^\#$
- $B_7^{(b5)}$
- $B^b_{-7}$
- $A^b$
- $G_7^{(b5)}$
- $C_7^{(\#9)}$
- $F_{-7}$
- $B_7^{(b5)}$
- $E^b_{-7}$
- $F_{-7}$
- $B^b_{-7}$
- $E^b_{-7}$
- $F_{-7}$
- $B^b_{-7}$
- $E^b_{-7}$
- $F_{-7}$
- $B_7$
- $G^b_{sus7}$
- $G_7^{(b13)}$
- $C_7^{(\#9)}$
- $C_7^{(b9)}$
- $A^b_{-7}$
- $G^b_{-7}$
- $E_7$
- $G^b_{-7}$
- $D_{-7}$
- $G_7^{(b13)}$

Rhythmic notation includes eighth notes, quarter notes, and rests, often grouped with slurs and repeat signs. A section is marked with a double bar line and a repeat sign.

D.C.

Rhythm Section      Looking Up    2/2

④

[illegible]