

7p (in C)

(A)

Handwritten musical notation for section (A). The notation is on two staves. The first staff has a treble clef and a key signature of one flat (Bb). The second staff has a bass clef. The notation includes various notes, rests, and accidentals. Above the first staff, the following chords are written: A ϕ 7, D7, G7, C7, F7, B \flat 7. Above the second staff, the following chords are written: E ϕ 7, A7, D7, G7.

(B)

Handwritten musical notation for section (B). The notation is on two staves. The first staff has a treble clef and a key signature of one flat (Bb). The second staff has a bass clef. The notation includes various notes, rests, and accidentals. Above the first staff, the following chords are written: C7, B \flat , A ϕ 7, D7, G7, C7. Above the second staff, the following chords are written: F ϕ 7, B \flat 7sus7.

(C)

Handwritten musical notation for section (C). The notation is on two staves. The first staff has a treble clef and a key signature of one flat (Bb). The second staff has a bass clef. The notation includes various notes, rests, and accidentals. Above the first staff, the following chords are written: C7, B \flat , A ϕ 7, D7, G7, C7. Above the second staff, the following chords are written: C7, F7, A ϕ 7, G \flat 7(#11).

Handwritten musical notation for the end of section (C). The notation is on two staves. The first staff has a treble clef and a key signature of one flat (Bb). The second staff has a bass clef. The notation includes various notes, rests, and accidentals. Above the first staff, the following chords are written: C7, F7, A ϕ 7, G \flat 7(#11). The word "fine" is written at the end of the second staff.

Four empty musical staves for additional notation.

AS, TS (inc)

(A)

Handwritten musical notation for section (A) on a grand staff. The key signature has two flats (Bb and Eb). The notation includes various note values, rests, and accidentals. The first staff has a treble clef and a key signature change to Bb. The second staff continues the melody. The section ends with a double bar line.

(B)

Handwritten musical notation for section (B) on a grand staff. The notation includes various note values, rests, and accidentals. The section ends with a double bar line.

(A')

Handwritten musical notation for section (A') on a grand staff. The notation includes various note values, rests, and accidentals. The section ends with a double bar line.

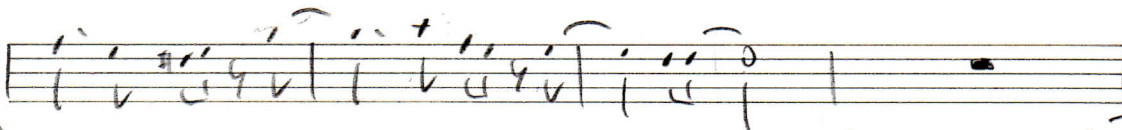
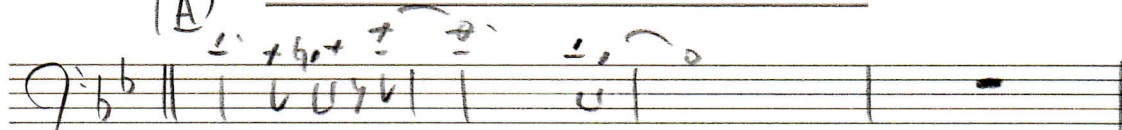
(C)

Handwritten musical notation for section (C) on a grand staff. The notation includes various note values, rests, and accidentals. The section ends with a double bar line and the word "fine" written below the staff.

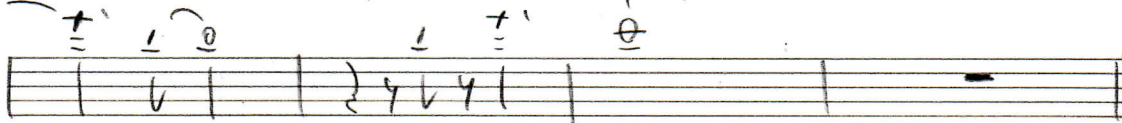
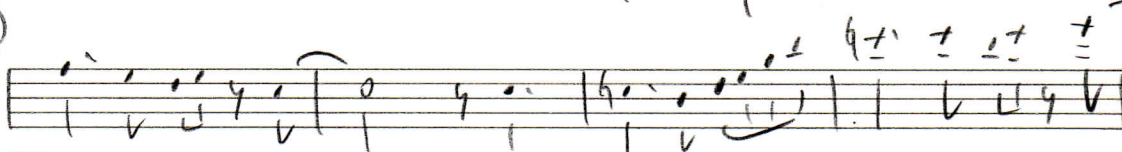
Four empty musical staves at the bottom of the page, each consisting of a five-line staff.

tb

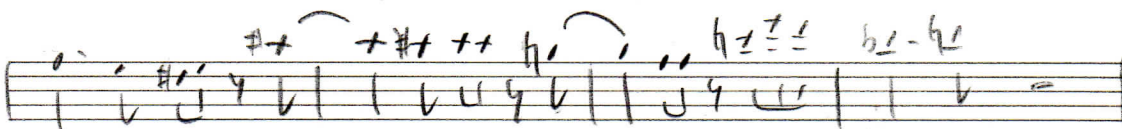
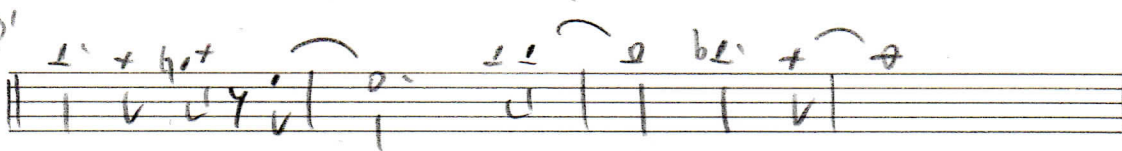
(A)



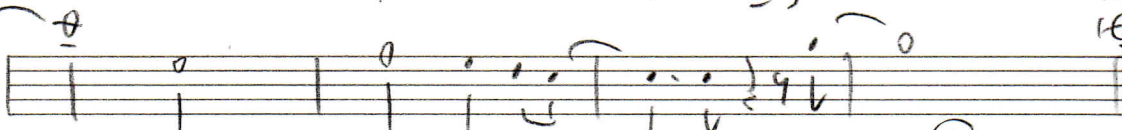
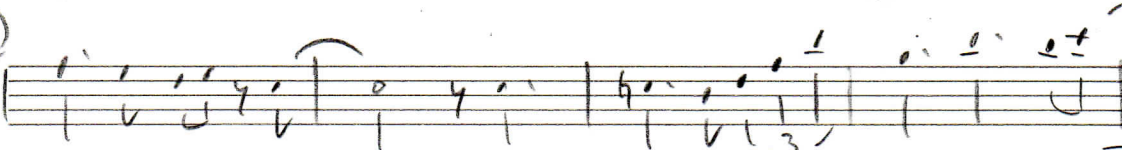
(B)



(A')



(C)



fine



Rhythm Section

(A)

Handwritten musical notation for section (A) on a single staff. The key signature has two flats (Bb and Eb). The notation consists of a double bar line with repeat dots, followed by a series of chords: Aø7, D7, G-7, C7, F-7, Bb7. There are some additional markings above the staff, including a line and a slash.

(B) 1.

Handwritten musical notation for section (B) 1. The notation consists of a double bar line with repeat dots, followed by a series of chords: C-7, Bb, Aø7, D7, G-7, C7.

(Latin)

Handwritten musical notation for section (Latin). The notation consists of a double bar line with repeat dots, followed by a series of chords: Fsus7, Bb, Bbsus7, and a measure labeled "Drums Fill".

(C) 2.

Handwritten musical notation for section (C) 2. The notation consists of a double bar line with repeat dots, followed by a series of chords: C-7, Bb, Aø7, D7, G-7, C7 (with a sharp sign over the C).

Handwritten musical notation for section (C) 2 continuation. The notation consists of a double bar line with repeat dots, followed by a series of chords: C-7, F7, Ab7, Gb7, Ab7, Bb7. There are some additional markings, including a line and a slash, and a "fine" marking at the end.

Empty musical staff.

Handwritten musical notation for section (C) 2 continuation. The notation consists of a double bar line with repeat dots, followed by a series of chords: Ab7, Gb7, Ab7, Bb7. There are some additional markings, including a line and a slash, and a "fine" marking at the end.

Empty musical staff.

Empty musical staff.

Empty musical staff.